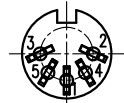
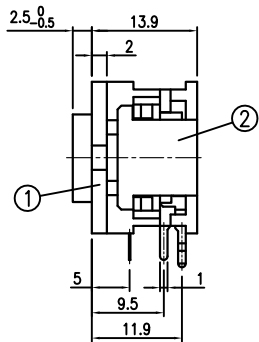
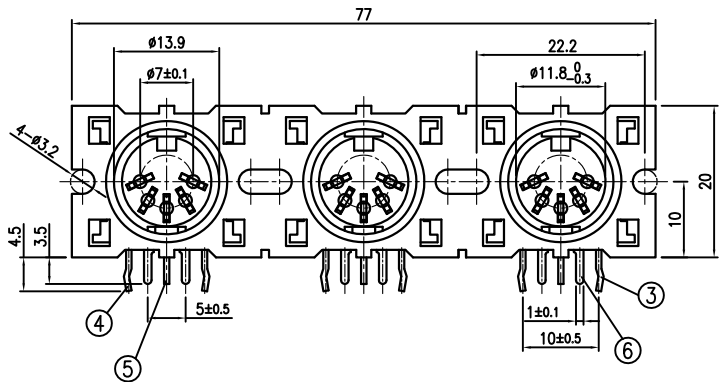


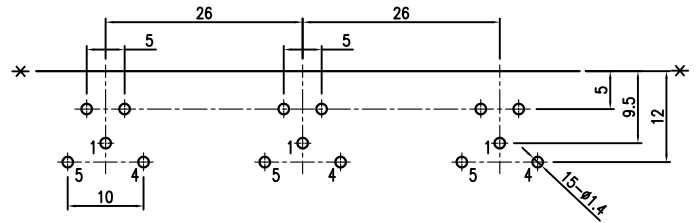
1 2 3 4 5 6

REVISIONS

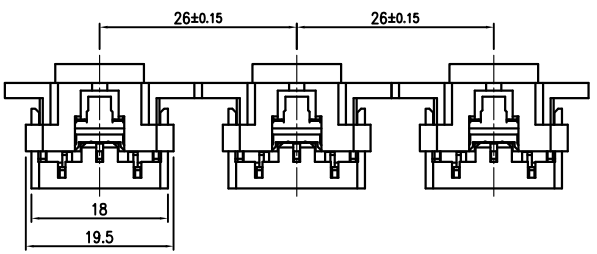
LTR	DESCRIPTION	DATE	REV.	CHKD.	APVD.
△x1	變更材質, 參CEN060046	2008.11.19	張啟濤	藍 昊	蔡志祿
△x1	變更材質, 參CEN060047	2008.11.19	張啟濤	藍 昊	蔡志祿
△x1	依C803001進行修正	2008.11.19	張啟濤	藍 昊	蔡志祿
△x0	To revise the drawing by NO.F06160936	2016.04.07	陳衛兵	張啟濤	陳宗碧



PIN LAYOUT TO INSERT PLUG



PCB Layout Dimension (Tolerance: ±0.10)  
(Recommend min. Dimension)(Bottom View)



△	6	TIP SPRING	3	PHOSPHOR	t=0.20	MBCu2-Sn3
	5	TERMINAL	3	BRASS	t=0.70	MBCu2-Sn3
	4	TERMINAL	3	BRASS	t=0.70	MBCu2-Sn3
	3	TERMINAL	3	BRASS	t=0.70	MBCu2-Sn3
△	2	COVER	3	PPO	UL 94V-1	BLACK
△	1	HOUSING	1	PPO	UL 94V-1	BLACK

LTR	PART NAME	Q'TY	MATERIAL	REMARK
0°	±2°	DWN	夏正雄	DATE 2004.02.21
0	±0.5	DSND	JAER	DATE 1998.03.20
0.0	±0.3	CHKD	夏正雄	DATE 2004.02.23
0.00	±0.1	APVD	龔雲輝	DATE 2004.02.24
DIMENSION	TOLERANCE	KUNMING ELECTRONICS CO.,LTD.		NAME DIN CONNECTOR CAT. NO. HDC-052SP-03 DWN.NO. A-052SP-03
				1/1 C

UNLESS OTHERWISE SPECIFIED, TOLERANCE ON DECIMAL: ±0.3 ANGLES: ±5°

The raw material specified by Sony should meet SS-00259 requirement of the latest version. When such material is used, it should be supplied by Sony designated suppliers.