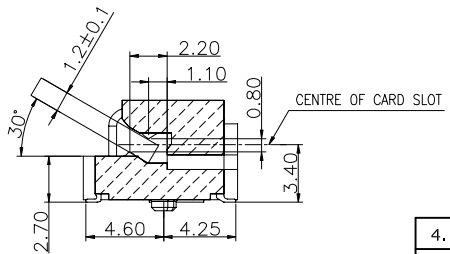
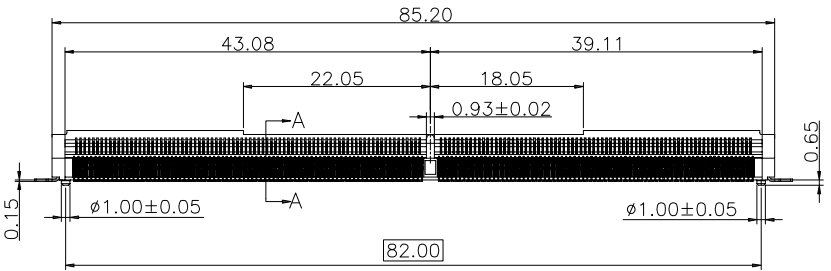
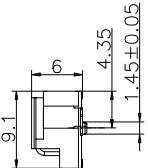
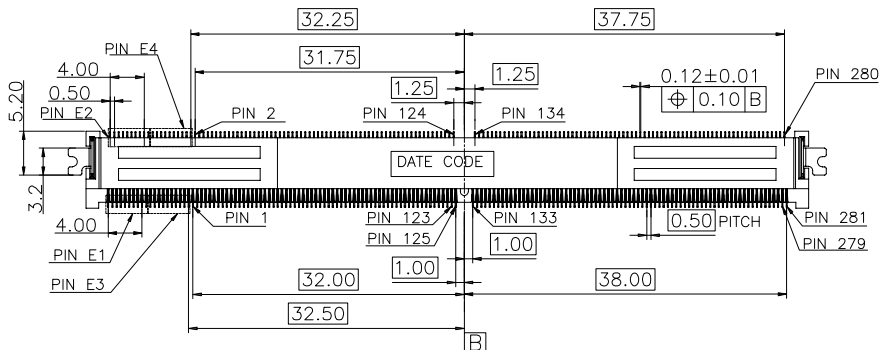
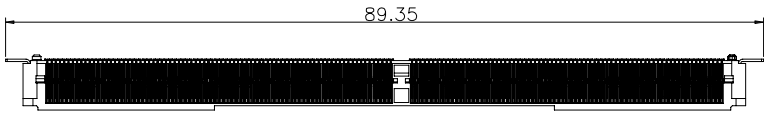



1	INITIAL RELEASE	JACK WU	2020/08/03
2	NEW FORM	Ron Lo	2024/04/12
3			

SPECIFICATION:

1. Current Rating: 5A
2. Insulation Resistance: 1000MΩ Min. at 500V DC
3. Dielectric Strength: 500V for one minute
4. Operation Temperature: -55°C ~ 105°C

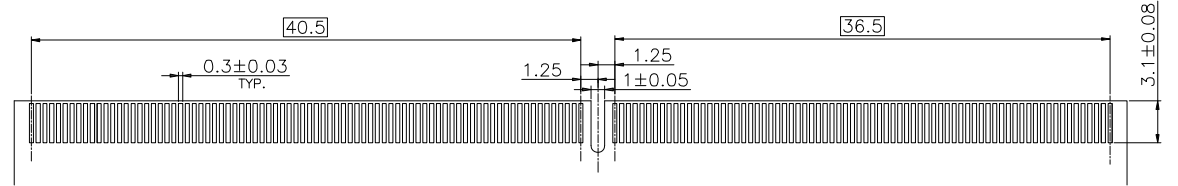
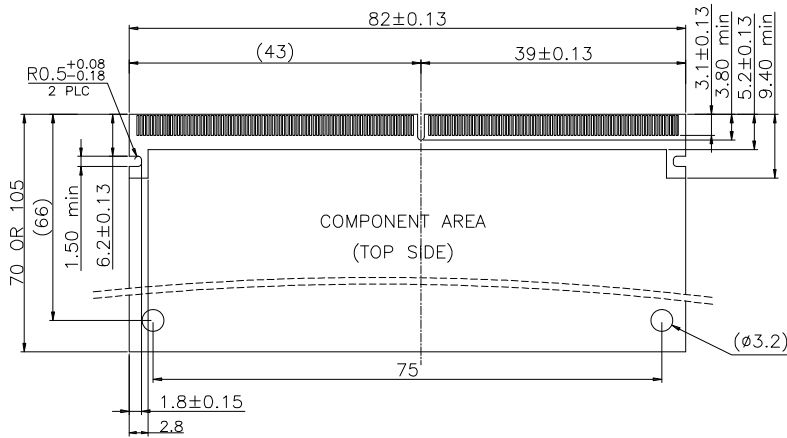


SECTION:A-A
SCALE 2:1

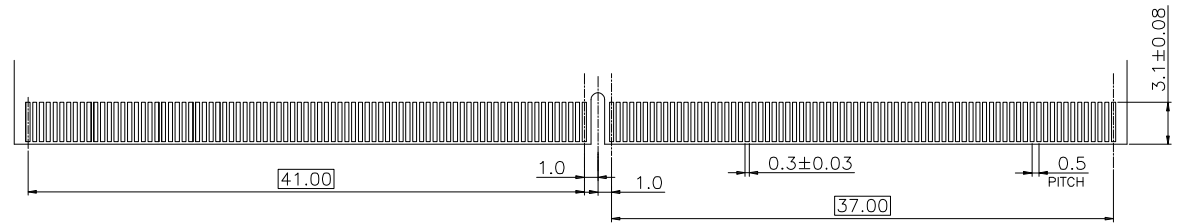
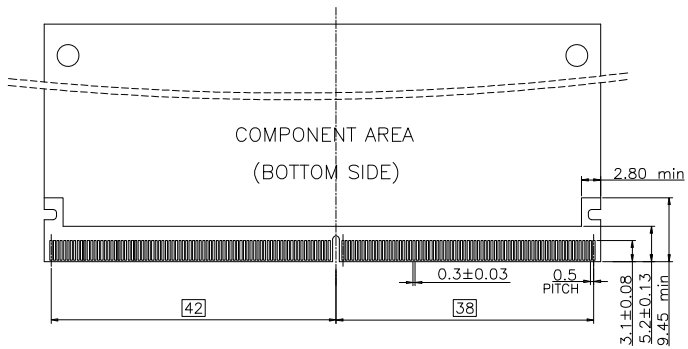
4.	SOLDER PEG	Copper Alloy, Tin Plated
2.	CONTACT	Copper Alloy, Gold Plating on Contact Area
1.	HOUSING	Gold Plating on Solder Area, Ni Underplating Overall
NO.	PART NAME	DESCRIPTION
DIMENSIONS : mm		TOLERANCES UNLESS OTHERWISE SPECIFIED : X. ± 0.30 X.X ± 0.20 X.XX ± 0.10 ANGLES ± 3°
		
SCALE	1 : 1	DWN JACK WU 20200803
SHEET	1/4	CHK PETER WANG 20200803
SIZE	A4	APVD SIMON LI 20200803
CUSTOMER DRAWING		PRODUCT NO. CX4-MXM302-171
		DRAWING NO. CE-MXM01
MXM 3 CONNECTOR 6H		

RECOMMENDED MODULE CARD

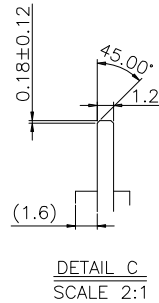
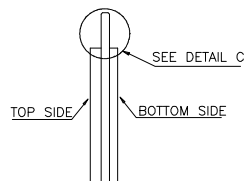
1	INITIAL RELEASE	JACK WU	2020/08/03
2	NEW FORM	Ron Lo	2024/04/12
3			



TOP SIDE
SCALE 2:1



BOTTOM SIDE
SCALE 2:1

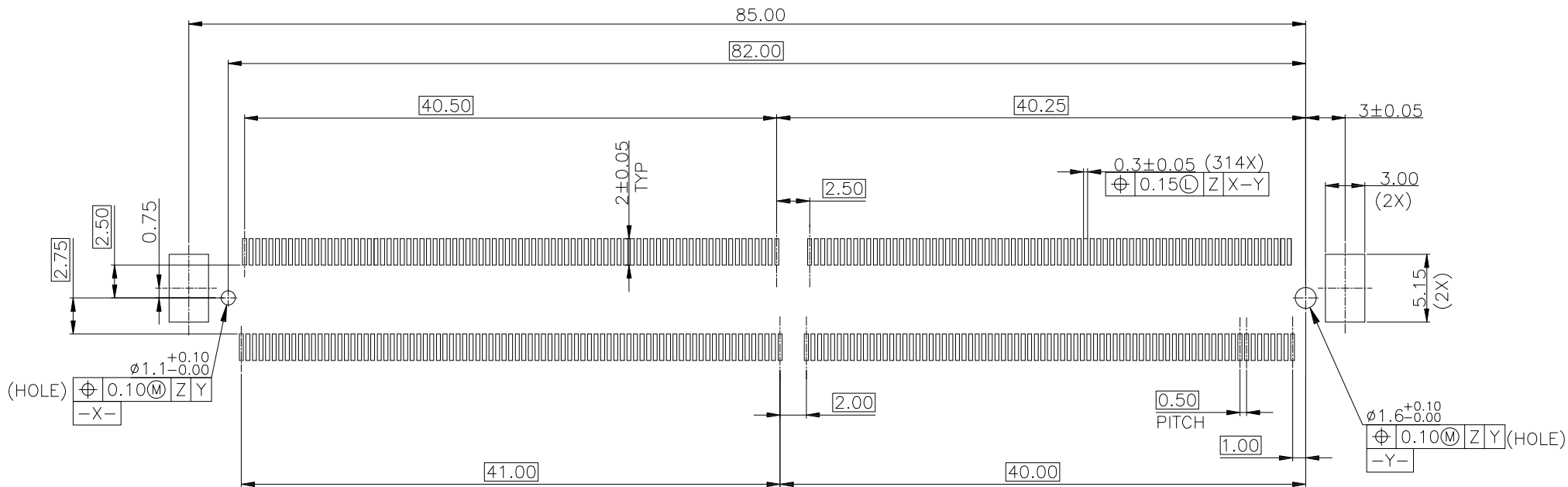


DETAIL C
SCALE 2:1

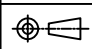
4.	SOLDER PEG	Copper Alloy, Tin Plated
2.	CONTACT	Copper Alloy, Gold Plating on Contact Area
1.	HOUSING	Hi-Temp Thermo Plastic, UL 94V-0, Color : Black
NO.	PART NAME	DESCRIPTION
DIMENSIONS : mm		TOLERANCES UNLESS OTHERWISE SPECIFIED :
		X, ± 0.30 X.X ± 0.20 X.XX ± 0.10 ANGLES ± 3°
SCALE	DWN	20200803
1 : 1	JACK WU	
SHEET	CHK	20200803
2/4	PETER WANG	
SIZE	APVD	20200803
A4	SIMON LI	
CUSTOMER DRAWING		PRODUCT NO. CX4-MXM302-171
		DRAWING NO. CE-MXM01

MXM 3 CONNECTOR 6H

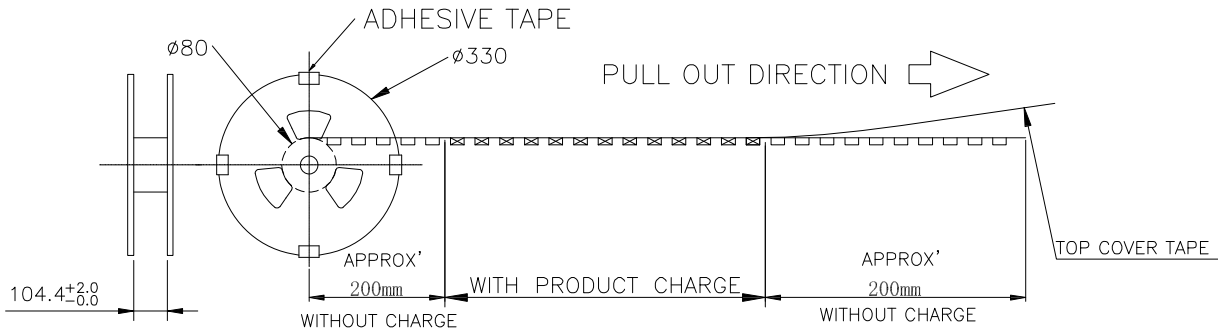
1	INITIAL RELEASE	JACK WU	2020/08/03
2	NEW FORM	Ron Lo	2024/04/12
3			



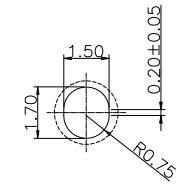
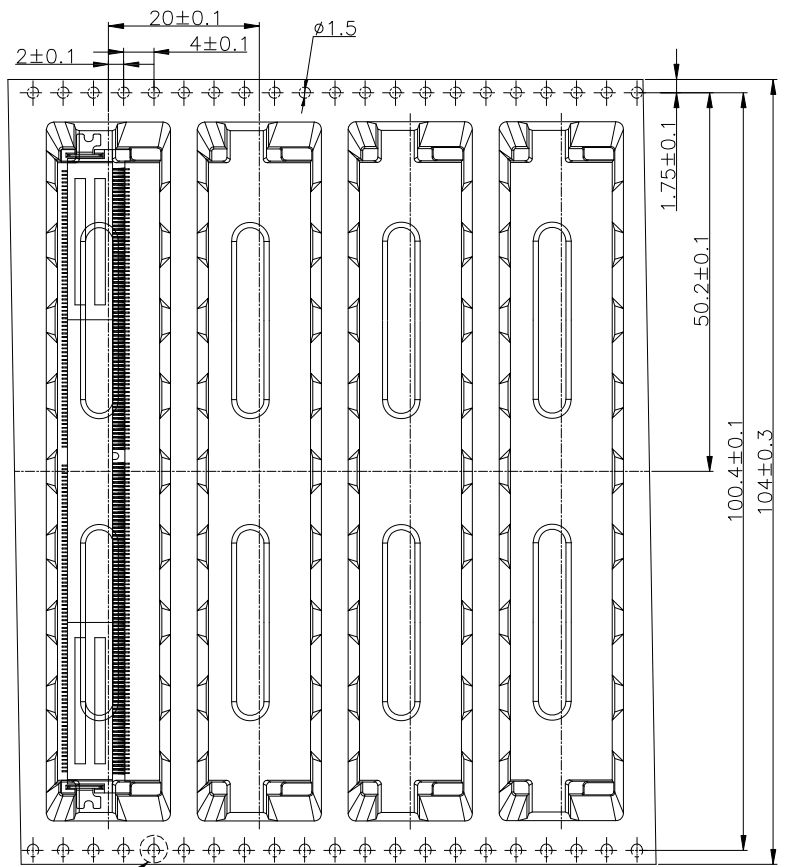
RECOMMENDED PCB LAYOUT
TOP VIEW

4.	SOLDER PEG	Copper Alloy, Tin Plated
2.	CONTACT	Copper Alloy, Gold Plating on Contact Area
1.	HOUSING	Hi-Temp Thermo Plastic, UL 94V-0, Color : Black
NO.	PART NAME	DESCRIPTION
DIMENSIONS : mm		TOLERANCES UNLESS OTHERWISE SPECIFIED : X. ± 0.30 X.X ± 0.20 X.XX ± 0.10 ANGLES ± 3°
		
SCALE	1 : 1	MXM 3 CONNECTOR 6H
SHEET	3/4	
SIZE	A4	
CUSTOMER DRAWING		
DWN JACK WU 20200803		NAME
CHK PETER WANG 20200803		PRODUCT NO. CX4-MXM302-171
APVD SIMON LI 20200803		DRAWING NO. CE-MXM01

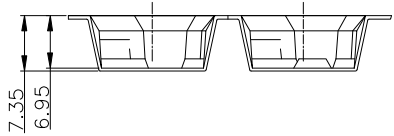
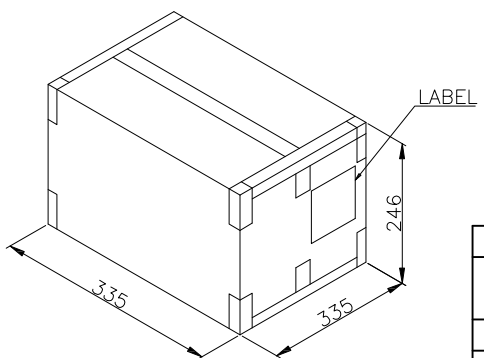
1	INITIAL RELEASE	JACK WU	2020/08/03
2	NEW FORM	Ron Lo	2024/04/12
3			



- NOTES :
- PACKAGING MATERIAL IN PLASTIC, RUBBER, INK, PIGMENT AND PAINT MUST MEET DEREN CONTROLLED SUBSTANCES SPEC.
- * CADMIUM AND CADMIUM COMPOUNDS NOT TO EXCEED: 5 PPM.
 - * LEAD, CADMIUM, CHROM VI AND MERCURY NOT TO EXCEED: 100 PPM (COMBINED).
 - * CARRIER TAPES, COVER TAPES, REELS AND TAPED COMPONENTS MUST MEET THE REQUIREMENTS DEFINED PER EIA-481-B.
- MATERIAL :
COVER TAPE : ANTISTATIC POLYESTER , COLOR: CLEAR
CARRIER TAPE : HIPS
REEL : PS
SHIPPING BOX: CORRUGATED FIBER
 - DIMENSION :
REEL : SEE DRAWING
BOX : SEE DRAWING
 - QUANTITY : SEE TABLE
 - WEIGHT : SEE TABLE
 - PEELING RESISTANCE : 10gf~100gf (for 8mm)
10gf~130gf (for 12mm~56mm)
10gf~150gf (for 72mm)
 - PEELING SPEED : 300mm/MINUTES



DETAIL A
SCALE 4:1



450	2	900
PCS/ REEL	REEL/ CARTON	PCS/ CARTON

4.	SOLDER PEG	Copper Alloy, Tin Plated
2.	CONTACT	Copper Alloy, Gold Plating on Contact Area
1.	HOUSING	Hi-Temp Thermo Plastic, UL 94V-0, Color : Black
NO.	PART NAME	DESCRIPTION
DIMENSIONS : mm		TOLERANCES UNLESS OTHERWISE SPECIFIED :
		X, ± 0.30 X.X ± 0.20 X.XX ± 0.10 ANGLES ± 3°
SCALE	DWN	20200803
SHEET	CHK	20200803
SIZE	APVD	20200803
CUSTOMER DRAWING		DRAWING NO.
A4		CE-MXM01
SIMON LI		PETER WANG
JACK WU		20200803
1 : 1		
		NAME
		MXM 3 CONNECTOR 6H
		PRODUCT NO. CX4-MXM302-171